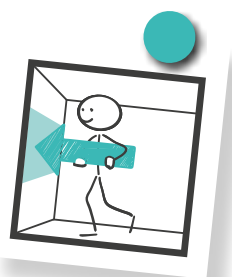


DECOFLAIR® 3D WALL PANELS INSTALLATION INSTRUCTIONS



Preparation

DECOFLAIR® 3D WALL PANELS must be stored dry and flat. The recommended temperature is + 15 ° C to + 25 ° C. For best results, storage and installation will be in conditions of humidity and temperatures close to those found in the rooms after mounting. Laying on wet support as well as very high temperatures, is excluded.

Wipe the edges and the back surface of the panels with a slightly damp sponge to well dust off and allow to dry. Ensure also that the support is clean, free of dust and grease.

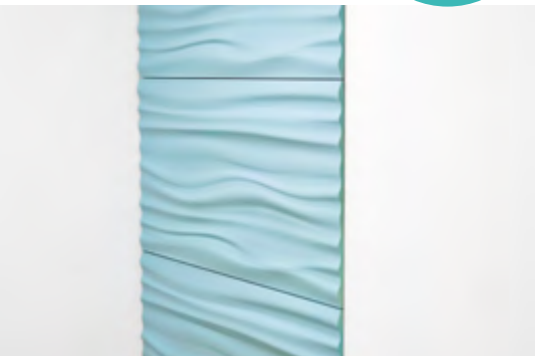
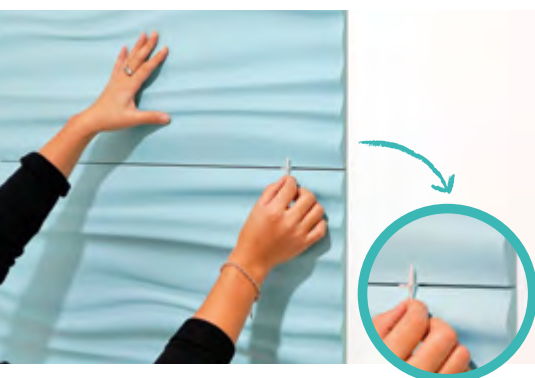
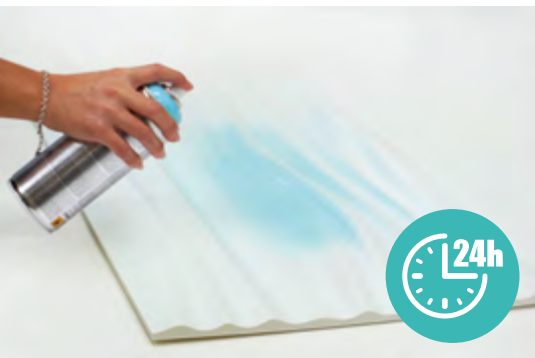


NMC sa
Gert-Noël-Strasse – B-4731 Eynatten
☎ +32 87 85 85 00 – 📠 +32 87 85 85 11
info@nmc.eu

www.nmc.eu



DECOFLAIR® 3D WALL PANELS

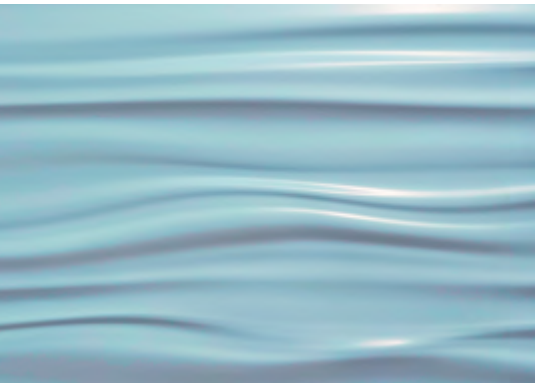


Installation with visible joints

1. Paint the panels using a roller for smooth surfaces or spray. Be sure also to apply a coat of paint on the edges of the panels.
REM: The DECOFLAIR® 3D WALL PANELS are compatible with water dilutable dispersion paints and dispersion varnishes based on acrylic or PU, as well as alkyd resin varnish. However, it is recommended to perform a test coat.
2. With the help of a panel draw up reference marks to determine the final alignment of the panels
3. During the drying time drive support nails at the bottom line for stabilization in case of free-standing installation
4. Pay attention (or: ensure) to matching the color of the bottom seal and the final color of the panels.
5. Glue on a regular basis the back of the panels with DECOFLAIR® PLUS adhesive taking care to provide the whole perimeter with a continuous glue line.
Adhesive consumption: ± 1 cartridge for 4 DECOFLAIR® 3D WALL PANELS
6. Align the panels and press them firmly until the glue adheres, according to the adhesive manufacturer's recommendations
7. In order to achieve an installation with uniform joints, use between each panel tile crosses of 2 mm

Important note: make sure that the joints between the panels are free of glue.

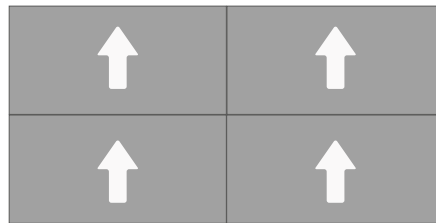
DECOFLAIR® 3D WALL PANELS



Additional instructions

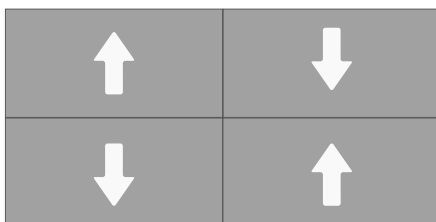
- The DECOFLAIR® 3D WALL PANELS are only intended for indoor use.
- After installation, the connections remain slightly visible. This is no reason for complaint.
- Polyurethane can undergo a slight deformation in case of increased variations in temperature and air humidity.
- The DECOFLAIR® 3D WALL PANELS can withstand temperatures up to + 60 °C
- Cuts in panels can be performed with any type of fine-toothed saw. Cut-outs can also be made in the Wall Panels to include switches, sockets, etc.
- For model BUBBLES/SAHARA, please observe the direction of placement indicated by the arrow on the backside of the panel.

Bubbles & Sahara

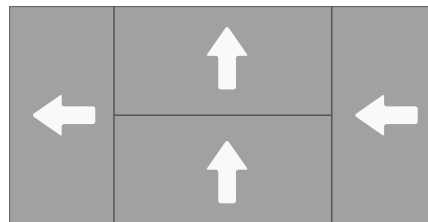


- Further installation options:

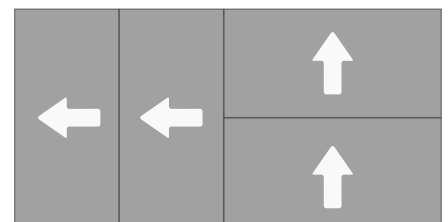
Ocean & Laces



Laces



Laces



Our company accepts no liability for non-compliance with the installation instructions.

www.nmc.eu

NMC sa
Gert-Noël-Strasse – B-4731 Eynatten
☎ +32 87 85 85 00 – 📠 +32 87 85 85 11
info@nmc.eu

